



Manufacturer of

- Gland Packing
- Graphite Ring / Graphoil Ring
- Removable Thermal Insulation
- Expansion Joint (Fabric / Metal)
- Gasketing (Teflon, Asbestos, Non-Asbestos, Rubber)
- Spiral Wound Gasket (SWG)
- Filter Bag
- Material Insulation



GRANDTWIN
ENGINEERING

Gland Packing



Gland Packing are very important components of pumps and shafts. There are countless of engineering applications rely on these devices to function properly.

Graphite Ring / Graphoil Ring



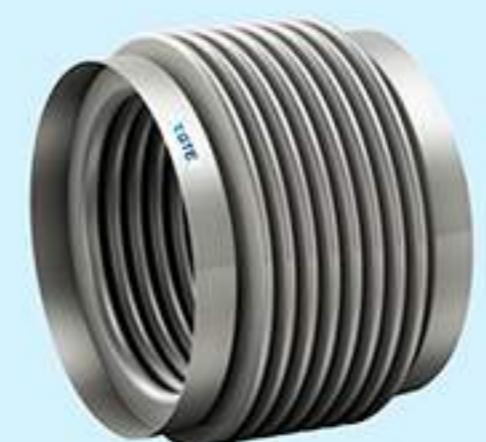
Graphite rings are die formed compressed graphite rings. They are flexible and highly impermeable to gases and liquids. Advantage of graphite rings is long life with no hardening deformations. Installation and removal of graphite rings can be done without danger of damage on the sealing faces.

Removable Thermal Insulation



Thermal insulation is the reduction of heat transfer (the transfer of thermal energy between objects of differing temperature) between objects in thermal contact or in range of radiative influence. Thermal insulation can be achieved with specially engineered methods or processes, as well as with suitable object shapes and materials.

Expansion Joint (Fabric / Metal)



Fabric Expansion Joints perform a function of compensating for duct misalignment and duct thermal growth typical in power plants and other ducting systems.

Fabric expansion joints are found wherever there is a need to convey hot media in low pressure applications such as "in flowing air" and "out flowing gas" in large combustion processes.

Gasketing



O'ring, also known as a packing, or a toric joint, is a mechanical gasket in the shape of a torus, it is a loop of elastomer with a round cross-section, designed to be seated in a groove and compressed during assembly between two or more parts, creating a seal at the interface.

Spiral Wound Gasket (SWG)



Spiral-wound gaskets comprise a mix of metallic and filler material. Generally, the gasket has a metal (normally carbon rich or stainless steel) wound outwards in a circular spiral (other shapes are possible) with the filler material (generally a flexible graphite) wound in the same manner but starting from the opposing side. This results in alternating layers of filler and metal.

The filler material in these gaskets acts as the sealing element, with the metal providing structural support.

Filter Bag



Filter Bag, filtering apparatus with porous cloth or felt bags through which dust-laden gases are sent, leaving the dust on the inner surfaces of the bags.

Material Insulation



Expanded PTFE
Joint Sealant



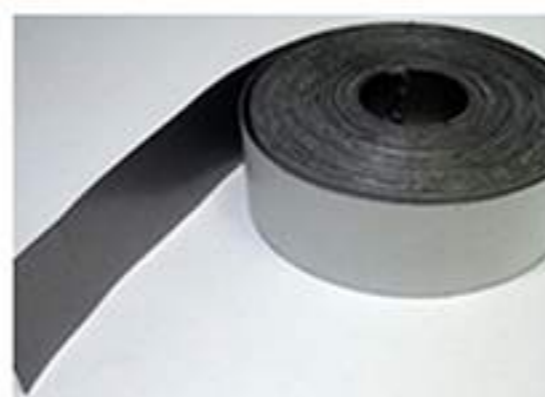
Asbestos Tape /
Fiberglass Tape /
Ceramic Tape



Asbestos Cloth /
Fiberglass Cloth /
Ceramic Cloth



Ceramic Blanket



Graphite Tape

Thank You

 **GRANDTWINS**
ENGINEERING



GRANDTWINS ENGINEERING

OFFICE:

Puri Kencana Blok II No.4
Jl. Raya Mustika Sari, Pengasinan
Rawa Lumbu, Bekasi
West Java - Indonesia

FACTORY:

Jl. Kedaung BKKBN RT.01 RW.04 No.15
Kp. Cimuning, Kel. Cimuning
Kec. Mustikajaya, Bekasi 17155
West Java - Indonesia

CONTACT:

Phone : 021 8241 5897, 8243 7920, 8243 7921
Fax : 021 8241 5898
Email : info@gte.co.id
Website : www.gte.co.id



Hubungi Agen Kami:

Incase of Emergency, please call:
+62 812 816 444 25
